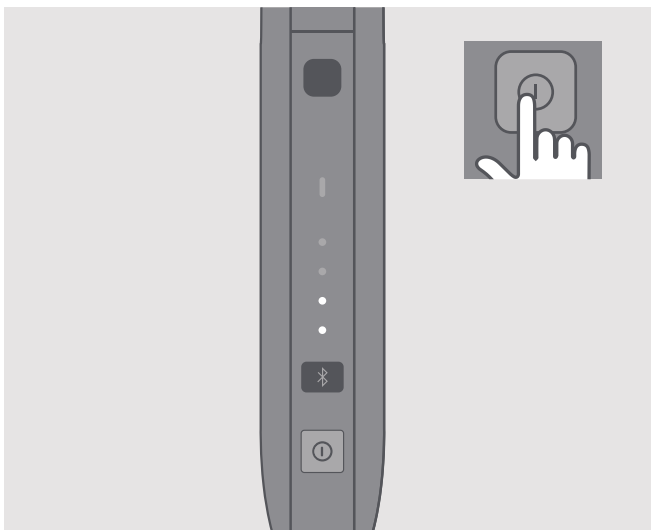
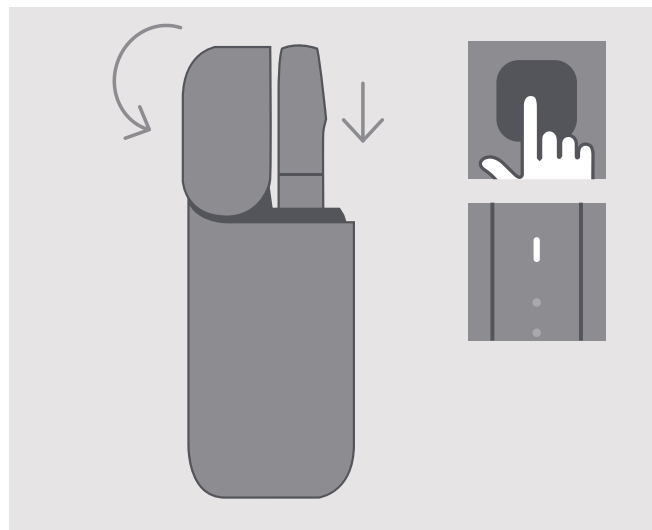


How to use your IQOS



1. TURN ON

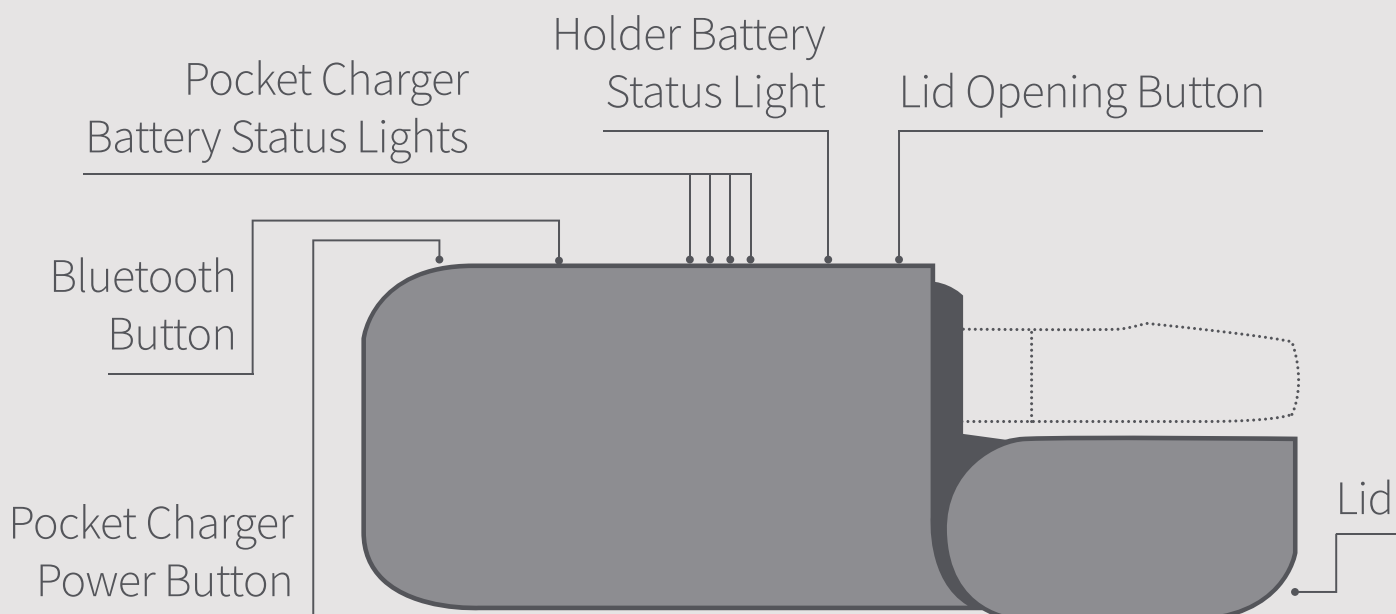
Press and hold the Pocket Charger Power Button until the lights switch on.

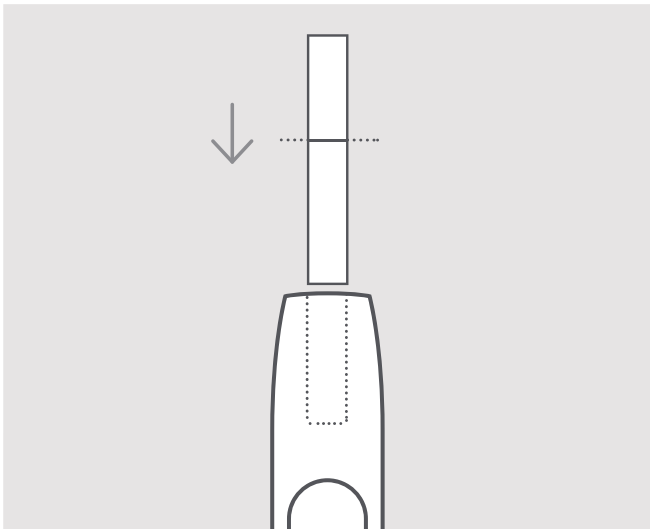


2. CHARGE HOLDER

Press the Lid Opening Button to open. Insert the Holder into the Pocket Charger, then close the Lid to charge. It is fully charged when the Holder Battery Status Light is solid white.

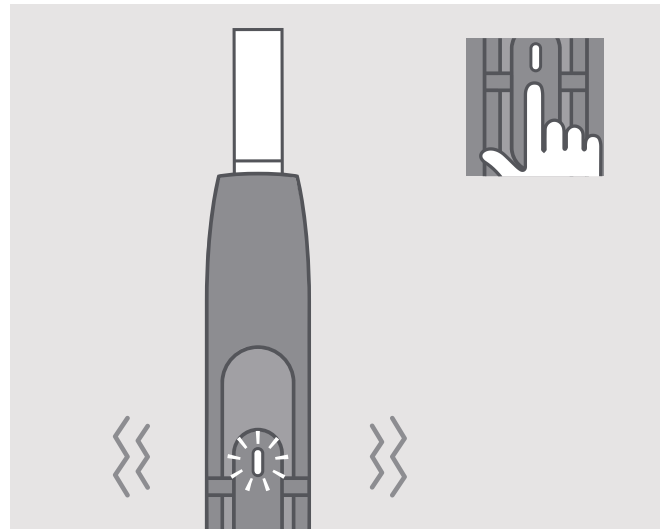
IQOS 2.4 Plus Pocket Charger





3. INSERT HEETS™ TOBACCO STICK

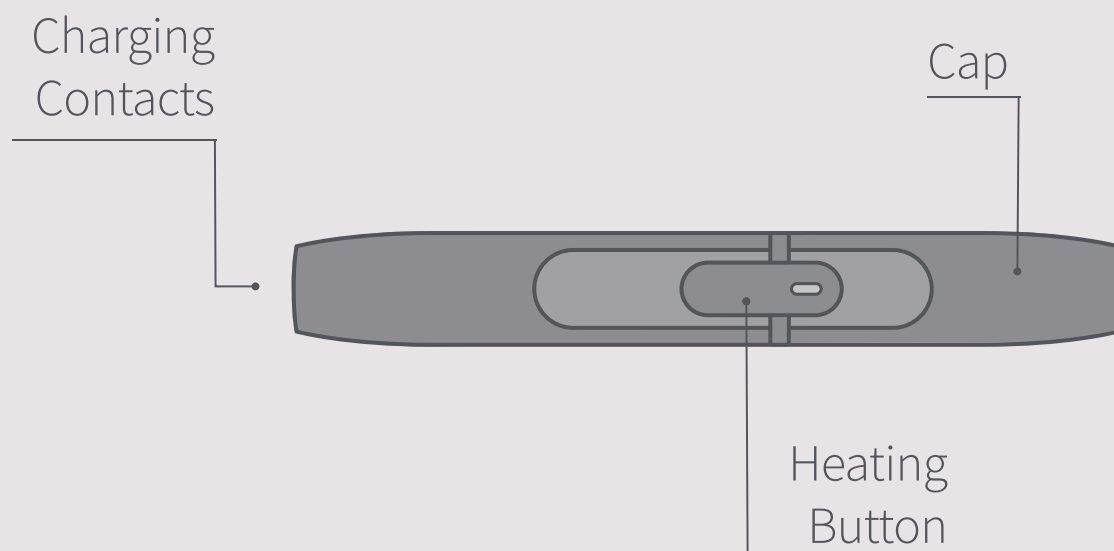
Insert and gently press the HEETS™ tobacco stick to the line on filter.

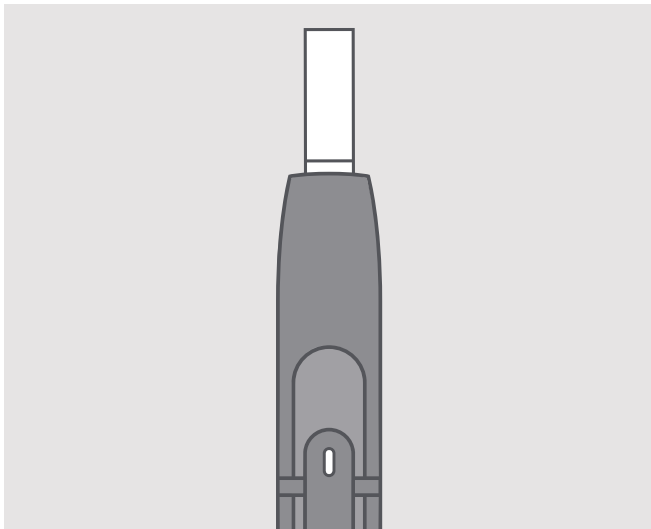


4. START HEATING

Press the Heating Button until the Holder vibrates and the light pulses white.

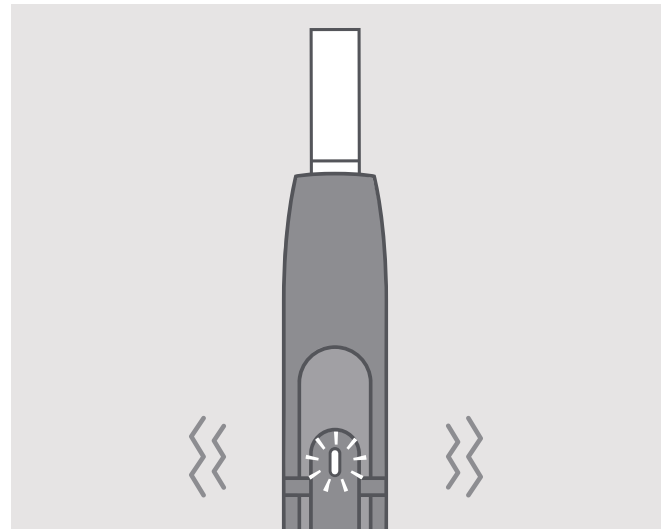
IQOS 2.4 Plus Holder





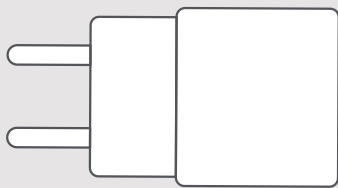
5. BEGIN USE

Start using once the light is solid white.

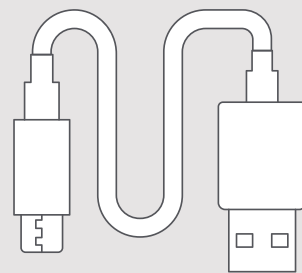


6. NEARLY COMPLETE

To signal the last 30 seconds, the Holder will vibrate and the light pulses white.



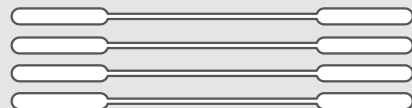
Power Adaptor



Charging Cable

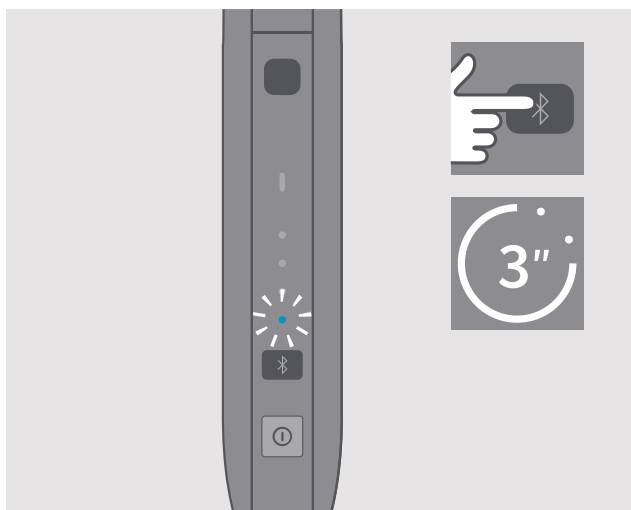


IQOS Cleaning Tool



IQOS Cleaning Sticks

Pairing your device*



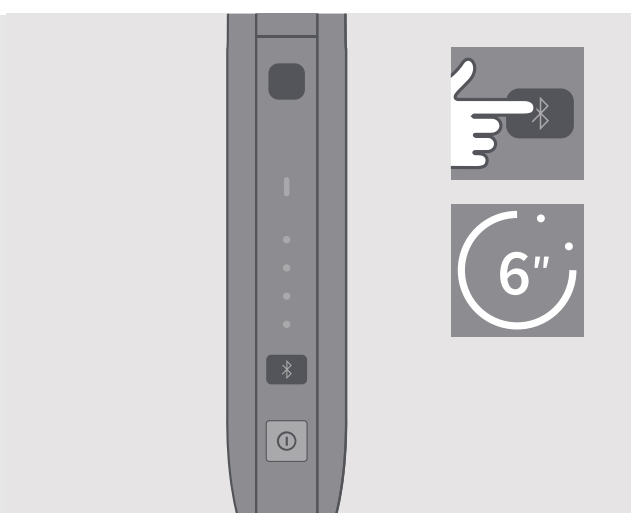
PAIRING MODE

Press the Bluetooth Button for 3 seconds then release. The Bluetooth Status light will blink for 30 seconds indicating pairing mode is active. Select pairing on your smartphone.



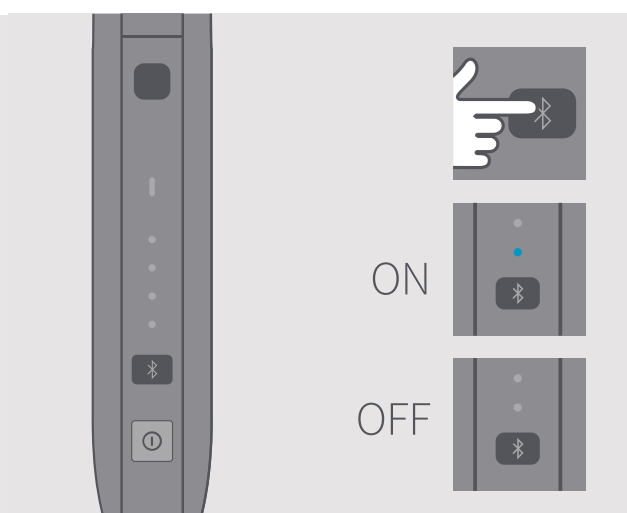
PAIRED

IQOS is paired with your smartphone when the Bluetooth Status light remains solid for 3 seconds.



SWITCH OFF

To switch off Bluetooth press the Bluetooth Button for 6 seconds.

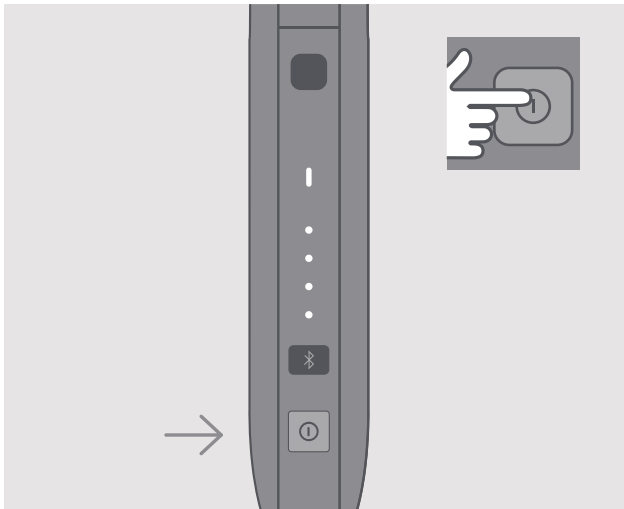


STATUS

Tap the Bluetooth Button to show the current status.

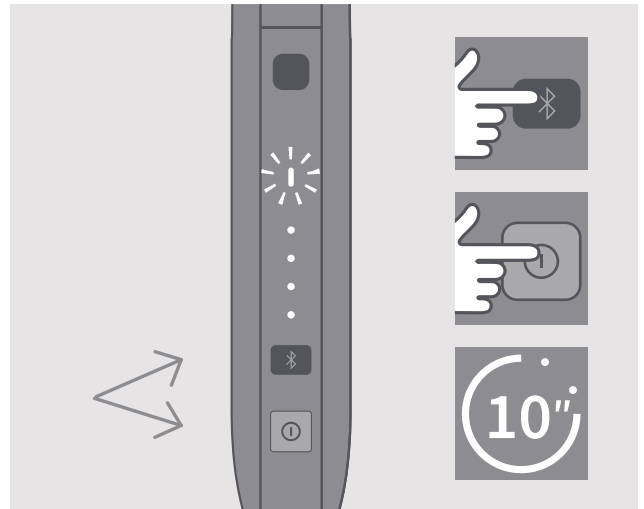
IQOS Connect App may not be available in your country therefore Bluetooth pairing may not be possible

Quick Tips



TO CHECK BATTERY STATUS

Tap the Pocket Charger Power Button to check the battery level.



TO RESET

Simultaneously press the Bluetooth and Pocket Charger Power Buttons for 10 seconds, then release. The Pocket Charger Battery Status lights will switch on, then blink twice to confirm a reset.



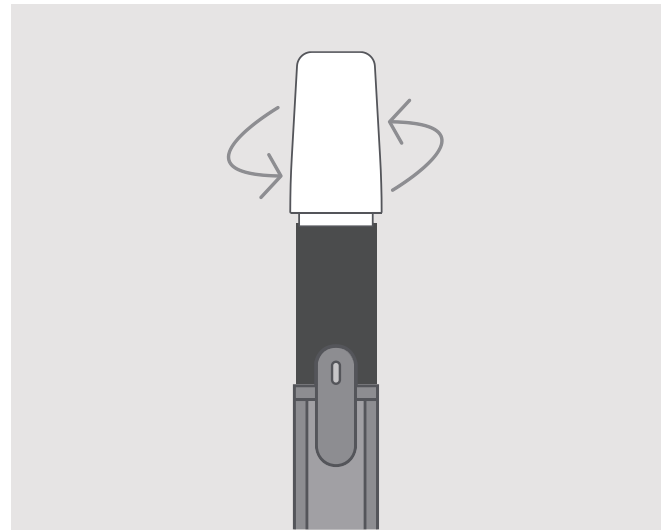
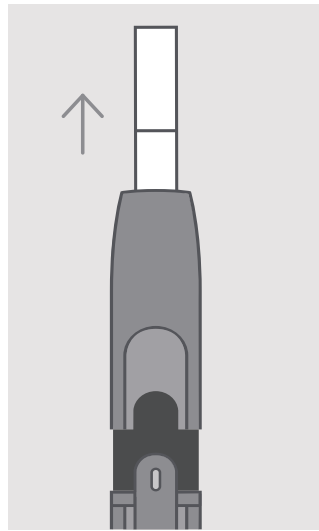
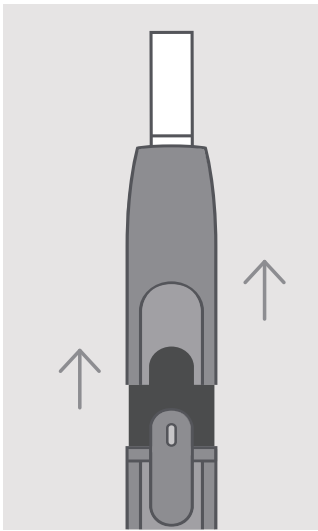
RED LIGHT ON HOLDER

1/ The Holder needs to be recharged. Place in the Pocket Charger and make sure it is switched on.
2/ If the light remains red after a recharge, try a reset as indicated above.



RED LIGHT ON POCKET CHARGER

Try resetting IQOS. If the red light persists, please contact Customer Care.



7. REMOVE HEETS™ TOBACCO STICK

Slide the Cap upward, remove the used HEETS™ tobacco stick then slide the Cap back again. Insert the Holder back in the Pocket Charger to recharge.

TO CLEAN

Slide the Cap upward and remove completely. Insert the IQOS Cleaning Tool and rotate gently. Clean daily for optimal experience.

ENGAGE WITH IQOS

For further instructions and Customer Care support visit www.iqos.com
Download the IQOS Connect App on Google Play*



*Google Play and the Google Play logo are trademarks of Google LLC.

*IQOS Connect App may not be available in your country.